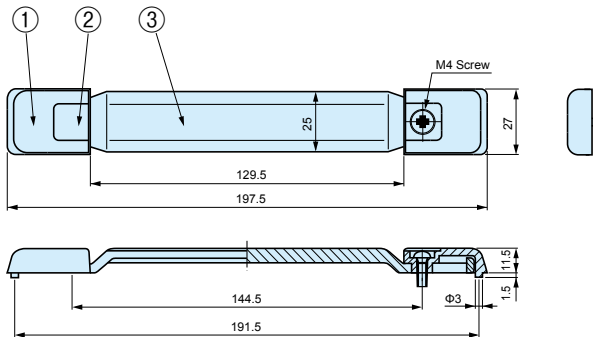
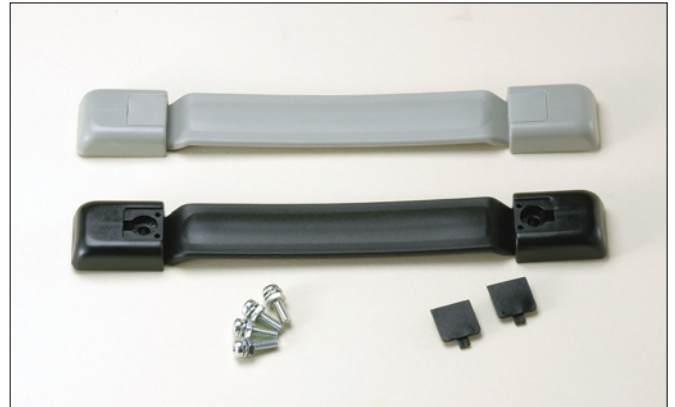
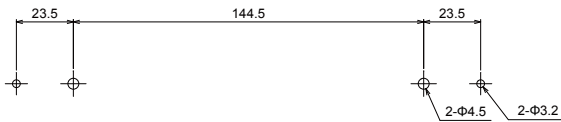


# MH·OH SERIES

## MH CARRYING HANDLE



Mounting hole



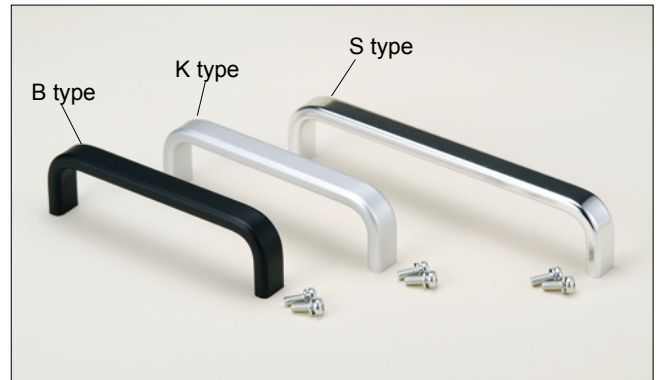
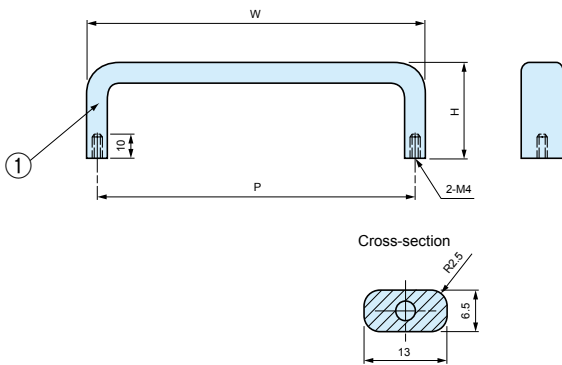
### Components

Ref. #	Part name	Pcs	Material	Color / Finish
1	Holder	2	PC	Gray · Black
2	Blind cap	2	PE	Gray · Black
3	Grip	1	PE	Gray · Black
-	M4 × 14 screw	2	Steel	Trivalent chromate
-	Spring washer	2	Steel	Trivalent chromate
-	Nut	2	Brass	Trivalent chromate

### Part no. / Dimensions

Part no.	Color	Max load
MH-197G	Gray	20kgf
MH-197B	Black	20kgf

## OH ALUMINIUM HANDLE



### Components

Ref. #	Part name	Pcs	Material	Finish
1	Handle	1	Aluminium	Anodized
-	M4×10 screw	2	Steel	Trivalent chromate
-	Spring washer	2	Steel	Trivalent chromate

### Part no. / Dimensions

1set = 2pcs

Part no.	P	W	H	Unit of sales
OH- 55□	55	61.5	30	2
OH- 70□	70	76.5	30	2
OH- 85□	85	91.5	30	2
OH-100□	100	106.5	30	2
OH-120□	120	126.5	30	2
OH-140□	140	146.5	30	2
OH-170□	170	176.5	30	2

• Please suffix color code S, B, K at the end of part number □ when ordering OH series.

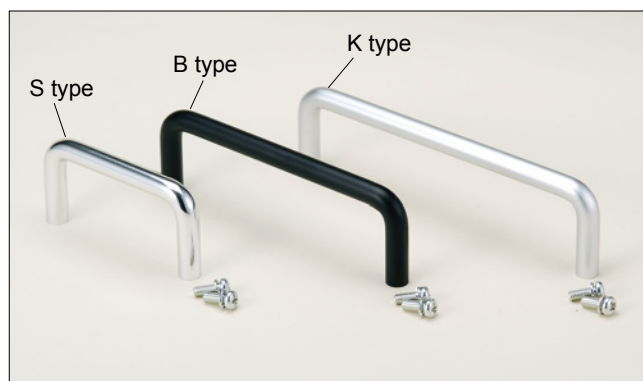
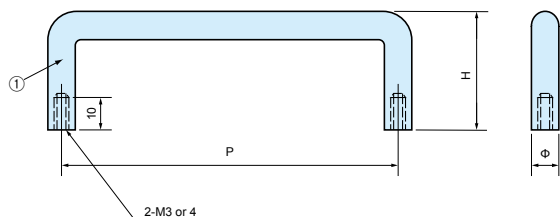
### Color Type

Color code	Color / Finish
S	Polishing anodized
B	Black anodized
※K	Silver anodized

※K type only has 4size (OH-100, 120, 140, 170).

# BH·Z-P SERIES

## BH ALUMINIUM HANDLE



### Components

Ref. #	Part name	Pcs	Material	Finish
1	Handle	1	Aluminium	Anodized
-	M3×8/M4×10 screw	2	Steel	Trivalent chromate
-	Spring washer	2	Steel	Trivalent chromate

### Color Type

Color code	Color / Finish
S	Polishing anodized
B	Black anodized
※K	Silver anodized

※K type only has 4size (BH-100, 120, 150, 180).

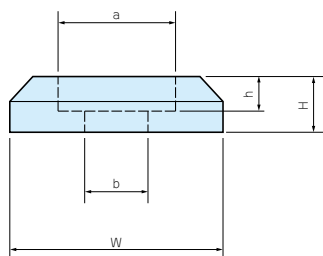
### Part no. / Dimensions

1set = 2pcs

Part no.	P	H	Φ	M	Unit of sales
BH- 26□	26	25	6	3	2
BH- 30□	30	35	8	4	2
BH- 50□	50	35	8	4	2
BH- 60□	60	35	8	4	2
BH- 70□	70	35	8	4	2
BH- 80□	80	35	8	4	2
BH- 100□	100	35	8	4	2
BH- 110□	110	35	8	4	2
BH- 120□	120	35	8	4	2
BH- 150□	150	35	8	4	2
BH- 180□	180	35	8	4	2

• Please suffix color code S, B, K at the end of part number □ when ordering BH series.

## Z-P HANDLE WASHER



### Part no. / Dimensions

1pack = 10pcs

Part no.	W	H	a	b	h	Material	Color / Finish
Z-P6S	10	2.5	6.2	4.5	1.5	Brass	Chrome plated
Z-P6B	10	2.5	6.2	4.5	1.5	Brass	Black painted
Z-P8S	12	2.5	8.2	4.5	1.5	Brass	Chrome plated
Z-P8B	12	2.5	8.2	4.5	1.5	Brass	Black painted

• For BH series.