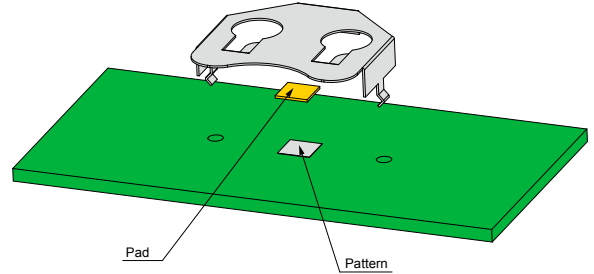


BK SERIES

BK METAL BATTERY HOLDER



- The best holder saving your PCB mount space.
- Please make a negative pole on PCB and place a pad or place our BK-2032M negative contact.
Refer to Negative contact BK-2032M on page 264

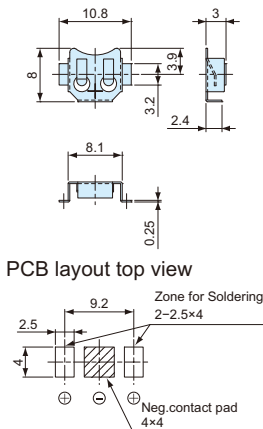


Part no. / Sales unit

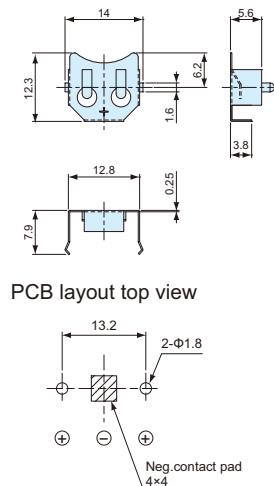
Part no.	Battery	Material / Finish	Mount type	Sales unit
BK-879	SR621 / ML621×1	Phosphor bronze / Ni plated	SMT	10pcs / pack
BK-5091	LR44×1	Phosphor bronze / Ni plated	Through- hole	10pcs / pack
BK-885	CR1220 / BR1225×1	Phosphor bronze / Ni plated	SMT	10pcs / pack
BK-890	CR1220 / BR1225×1	Phosphor bronze / Ni plated	Through- hole	10pcs / pack
BK-868	CR1632 / CR1620×1	Phosphor bronze / Ni plated	SMT	10pcs / pack
BK-869	CR1632 / CR1620×1	Phosphor bronze / Ni plated	Through- hole	10pcs / pack
BK-5067	CR2016×1	Phosphor bronze / Ni plated	SMT	10pcs / pack
BK-888	CR2032 / CR2025×1	Phosphor bronze / Ni plated	Through- hole	10pcs / pack
BK-885-TR	CR1220 / BR1225×1	Phosphor bronze / Ni plated	SMT	800pcs / reel

- CAD data is downloadable from our website.

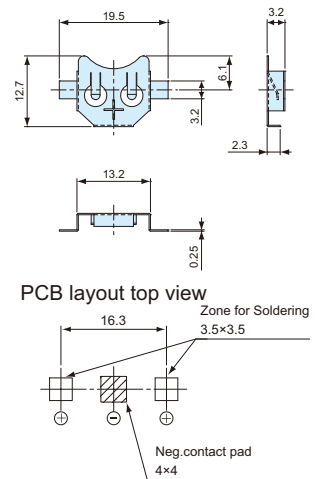
BK-879 dimensions



BK-5091 dimensions

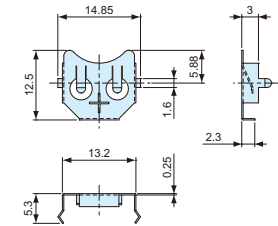


BK-885 dimensions

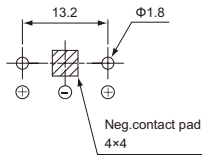


• CAD data is downloadable from our website.

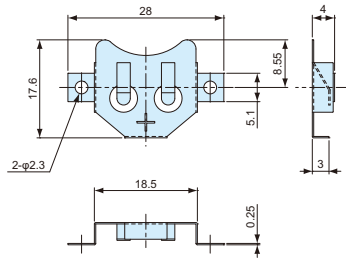
BK-890 dimensions



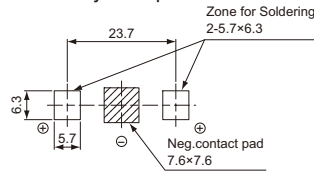
PCB layout top view



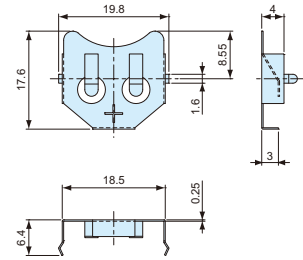
BK-868 dimensions



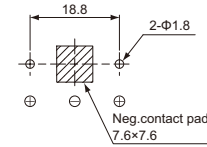
PCB layout top view



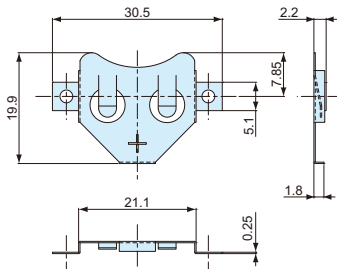
BK-869 dimensions



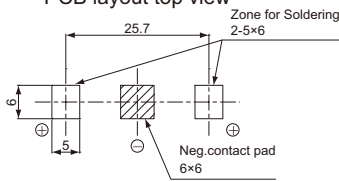
PCB layout top view



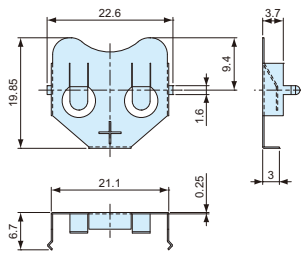
BK-5067 dimensions



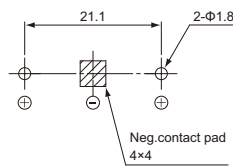
PCB layout top view



BK-888 dimensions

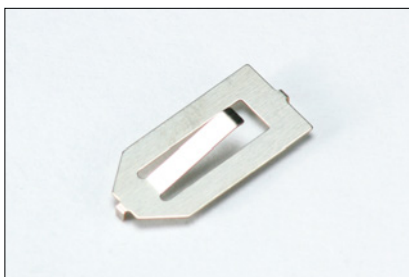


PCB layout top view



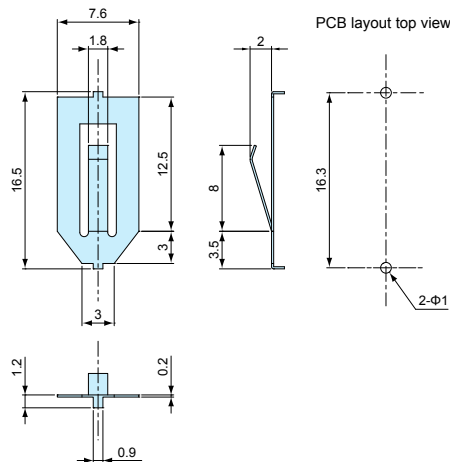
BK NEGATIVE CONTACT

• CAD data is downloadable from our website.

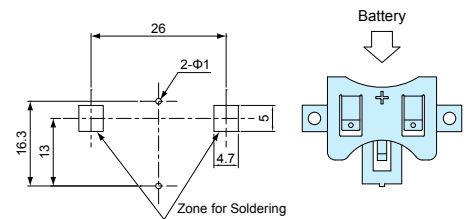


- Negative contact for CR2032 battery.
- Suitable for using with SMTM2032 or BK-888.

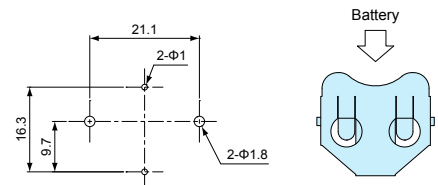
BK-2032M dimensions



SMTM+BK-2032M PCB layout top view



BK-888+BK-2032M PCB layout top view



• Recommend to use PCB thickness 1mm or less.

Part no. / Dimensions

Part no.	Battery	Material / Finish	Sales unit
BK-2032M	CR2032	Phosphor bronze / Ni plated	10