

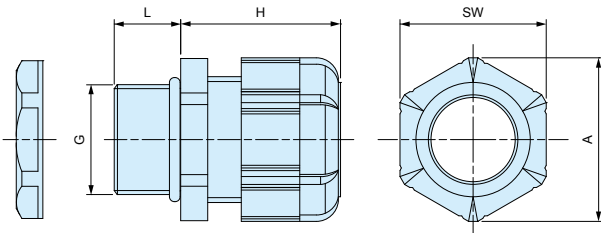


- Weatherproof cable gland equipped with high ultraviolet and degradation resistant silicone sealing insert and O ring.
- Recommended to use outdoors where waterproofing is critical.

Components

No.	Part name	Material
1	Cap	PA66 (UL94V-2)
2	Sealing insert	Silicone
3	Connector	PA66 (UL94V-2)
4	O ring	Silicone
5	Nut	PA66 (UL94V-2)

RMW Dimensions



Technical data

Protection class IP67
Temperature range -20°C ~ +80°C

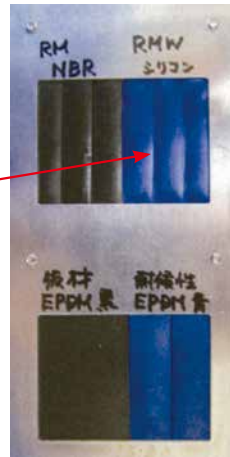
- DXF / DWG / PDF drawings available on our website.
- Lock nut is not included in RMW10S-6.
Please drill a proper thread hole onto the enclosure for installation .

Part number / Dimension

Part number		G		Cable range		L	H Max	SW	A	Sales unit
● Black	● Light gray	Thread size	Mounting hole	Min	Max					
RMW 8L- 2.5B	RMW 8L- 2.5S	M8×1.25	Φ8.2	1	2.5	13	19.5	11.8	13.5	1
RMW 8L- 4 B	RMW 8L- 4 S	M8×1.25	Φ8.2	2.5	4	13	19.5	11.8	13.5	1
RMW10S- 6 B	RMW10S- 6 S	M10×1.5	—	3	6	8	20.5	13	14.4	1
RMW10L- 6 B	RMW10L- 6 S	M10×1.5	Φ10.2	3	6	13	20.5	13	14.4	1
RMW12S- 7 B	RMW12S- 7 S	M12×1.5	Φ12.2	3.5	7	9	20.5	16	17.6	1
RMW12L- 7 B	RMW12L- 7 S	M12×1.5	Φ12.2	3.5	7	14.5	20.5	16	17.7	1
RMW16S- 8 B	RMW16S- 8 S	M16×1.5	Φ16.2	4	8	9	23.5	19	21	1
RMW16L- 8 B	RMW16L- 8 S	M16×1.5	Φ16.2	4	8	15	24	19	21	1
RMW20S-12 B	RMW20S-12 S	M20×1.5	Φ20.2	6	12	10	29	24	26.2	1
RMW20L-12 B	RMW20L-12 S	M20×1.5	Φ20.2	6	12	15	28.5	24	26.2	1
RMW25L-17 B	RMW25L-17 S	M25×1.5	Φ25.2	11	17	15	35	33	36.2	1
RMW32L-21 B	RMW32L-21 S	M32×1.5	Φ32.3	13	21	15	38	36	39.5	1
RMW40L-27 B	RMW40L-27 S	M40×1.5	Φ40.3	18	27	18	43.5	45.7	50.5	1
RMW50L-38 B	RMW50L-38 S	M50×1.5	Φ50.4	27	38	20	50.5	60	66.5	1
RMW 8L- 2.5B-P	RMW 8L- 2.5S-P	M8×1.25	Φ 8.2	1	2.5	13	19.5	11.8	13.5	100
RMW 8L- 4 B-P	RMW 8L- 4 S-P	M8×1.25	Φ 8.2	2.5	4	13	19.5	11.8	13.5	100
RMW10L- 6 B-P	RMW10L- 6 S-P	M10×1.5	Φ10.2	3	6	13	20.5	13	14.4	100
RMW12S- 7 B-P	RMW12S- 7 S-P	M12×1.5	Φ12.2	3.5	7	9	20.5	16	17.6	100
RMW12L- 7 B-P	RMW12L- 7 S-P	M12×1.5	φ12.2	3.5	7	14.5	20.5	16	17.7	100
RMW16S- 8 B-P	RMW16S- 8 S-P	M16×1.5	φ16.2	4	8	9	23.5	19	21	100
RMW16L- 8 B-P	RMW16L- 8 S-P	M16×1.5	φ16.2	4	8	15	24	19	21	100
RMW20S-12 B-P	RMW20S-12 S-P	M20×1.5	φ20.2	6	12	10	29	24	26.2	100
RMW20L-12 B-P	RMW20L-12 S-P	M20×1.5	φ20.2	6	12	15	28.5	24	26.2	100
RMW25L-17 B-P	RMW25L-17 S-P	M25×1.5	φ25.2	11	17	15	35	33	36.2	100

RMW series silicone sealing insert weatherproof test report

Object : Cut into a piece of the silicone sealing insert from RMW series and attach it onto an aluminium plate.
 For comparison, NBR sealing insert from our RM and EPDM sealing insert from another manufacturer is also attached.



Before



After

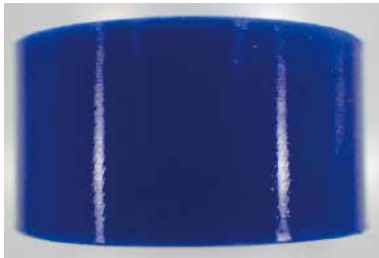
Testing Conditions

Equipment : 7.5kW Super Xenon Weather Meter SX75 (Suga Test Instruments Co., Ltd.- <http://www.sugatest.co.jp/english/>)
Conditions : JIS B7754 : 1991
 Testing with an authorized Xenon arc lamp weathering test equipment under the conditions denoted below.
 Irradiance : 180W/m² at 300-400nm
 Black Panel Temperature : 63±3°C Humidity Range : 50±10%
 Cycle Conditions : 120 minutes cycle (18 minutes irradiation + water spray - 102 minutes irradiation)
Time Period : 2,000 hours (equivalent to a period of 4 years under natural conditions)
Total radiant exposure : 1296MJ/m²

Test Result

Visual/Touch inspection : No cracks, no gloss transition, no powder - no appearance change at all. Flexibility remains unchanged.

Before



After



NBR material from our RM series : Lost glossiness on the surface and material is stiffened.

Before

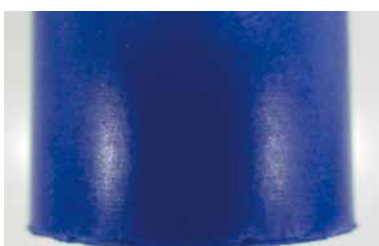


After



EPDM material from weatherproof cable gland of another manufacturer : Cracked, color drastically faded and powder on the surface appeared.

Before



After

